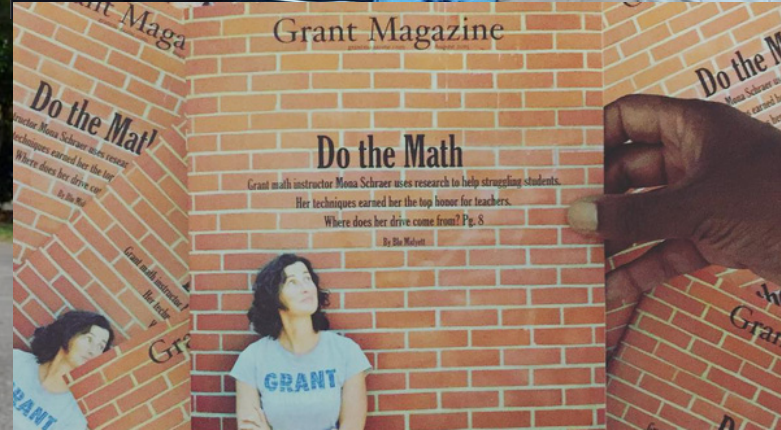


mahlum

Design Advisory Group Meeting 01
09.09.15



Portland Public Schools (PPS)

- **Michelle Chariton** *Project Director*
Office of School Modernization
- **Kristie Moore** *Project Coordinator*
Office of School Modernization

Mahlum

- **Diane Shiner** *Principal-in-Charge*
- **Alyssa Leeviraphan** *Project Manager*
- **JoAnn Wilcox** *Project Architect Design Lead*
- **Rene Berndt** *Design Support*

Core Mahlum Team



Diane Shiner
AIA LEED AP

Principal-in-Charge



Alyssa Leeviraphan
AIA LEED AP

Project Manager



JoAnn Wilcox
AIA LEED AP

Project Architect,
Design Lead



Rene Berndt
AIA LEED AP

Design Support



COMMUNITY

Restaurant Owner









Building Dignity

Design Strategies for Domestic Violence Shelter

SEARCH



- SITE DESIGN
- COMMUNAL SPACE
- KITCHEN
- PRIVATE SPACE
- STAFF SPACE
- BACKGROUND
- RE

- Empower
- Secure
- [Re]connect
- Parent
- Harmonize



Private Spa

Many domestic violence shelters provide their victims to violati... denial of privacy, and... reflection, rest and p... For that reason priva... are integral to healin... regaining autonomy, parenting. Here, we c... respite, sanctuary, a



Experience: Historic Renovations

Cleveland High School,
Seattle Public Schools

**Nathan Hale High School Modernization
& Addition,** Seattle Public Schools

Coe Elementary School Renovation,
Seattle Public Schools

Queen Anne Elementary Renovation,
Seattle Public Schools

The Northwest School

Clark Hall, University of Washington

Suzzallo Library, University of Washington

Miller Hall,
Western Washington University

Bellingham High School Renovation,
Bellingham School District

Lenora Square Renovation/Main Campus Center,
Cornish College of the Arts

**Sons of Norway Hall Renovation/
Raisbeck Hall,** Cornish College of the Arts

Anderson Hall, University of Washington



Experience: Complex Renovations

Rainier Beach High School Science Wing, Seattle Public Schools

Viewlands Elementary School Modernization, Seattle Public Schools

Nathan Hale High School Modernization, Seattle Public Schools

Queen Anne Elementary School Renovation, Seattle Public Schools

Forest Grove HS Addition & Renovation, Forest Grove School District

North Medford HS Renovation, Medford School District

W.L. Henry Elementary School Remodel, Hillsboro School District

J.W. Poynter MS Additions & Renovation, Hillsboro School District

Reedville Elementary School Renovation, Hillsboro School District

Farmington View ES, Hillsboro School District

Milwaukie HS Addition & Renovation, North Clackamas School District

Bainbridge Island High School 200 Building, Bainbridge Island School District



Experience: High Schools

Bundrant Ness STEM Center, CRISTA
Ministries King's School

**Rainier Beach & Roosevelt High School
Science Renovation,** Seattle Public Schools

Forest Grove HS Addition & Renovation,
Forest Grove School District

Issaquah High School, Issaquah School
District

Nathan Hale High School Modernization,
Seattle Public Schools

South Medford HS Renovation,
Medford School District

Hayes Freedom High School,
Camas School District

Milwaukie HS Addition & Renovation,
North Clackamas School District

North Medford HS Renovation,
Medford School District

**Bainbridge Island High School 200 Building &
Science Renovation,** Bainbridge Island School District

Muckleshoot Tribal School,
Muckleshoot Indian Tribe

**Cleveland High School Modernization and
Addition,** Seattle Public Schools



Cleveland High School

Constructed in 1925, 1957 & 1968

81,000 SF major renovation and 91,000 SF new construction

City of Seattle Landmark building

Respects existing building fabric, targeted interventions

Increased natural light, ventilation;
improved circulation and campus wayfinding

Innovative Small Schools / STEM program











Nathan Hale High School

Constructed in 1962 & 1972

204,000 SF major modernization and 14,500 SF addition

Respect existing building fabric

Facilitate learning everywhere

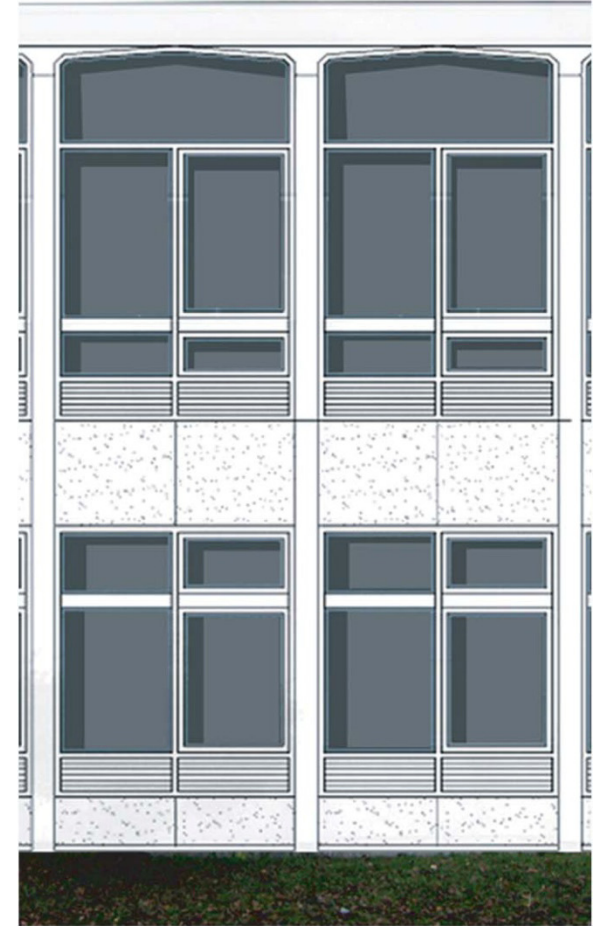
Support a wide range of learning styles

Reinforce positive relationships

Foster creativity and inquiry











CHE
GUEVARA

EMERGENCY
ONLY - ALARM
WILL SOUND

FREEDOM
Fig. L. L. L.

← MAIN OFFICE
COUNSELING
REGISTRAR
SECURITY

PORTABLES:
TO P-13
-TEEN HEALTH CENTER
TO P-14
-CLASSROOMS
TO P1-P12
-CLASSROOMS

←
DOWNSTAIRS



MAHATMA
GANDHI





NORTH FORUM



HALE
is
XC



Design Advisory Group (DAG)

- **Renee Anderson** *Local/Neighborhood*
- **Jason Blumklotz** *Cluster Parent*
- **Carol Campbell** *Grant HS Principal*
- **Doug Capps** *Grant HS Alumni*
- **Miriana Clark** *Local/Neighborhood*
- **Bill Dickey** *Neighborhood Business Rep*
- **Katie Davidson** *Grant HS Student*
- **Pam Knowles** *Board Member Liaison*
- **Jack Kolze** *Cluster Parent*
- **Connor Kolze** *Grant HS Student*
- **Heather Leek** *Neighborhood Business Rep*
- **M. Taylor Matsushima** *Grant HS Student*
- **Monique McClean** *School Community*
- **Zack Olson** *Grant HS Student*
- **Jim Regan-Vienop** *Grant HS Parent*
- **Michael Tom** *Grant HS Parent*
- **Tess Waxman** *Grant HS Student*
- **Daniel Weidman** *Grant HS Student*
- **Abby Williams** *Local/Neighborhood*

DAG Committee Chair Election



Agenda

Process & Schedule

District Principles & Values

Foundational Questions

Creative Exercise

Next Steps

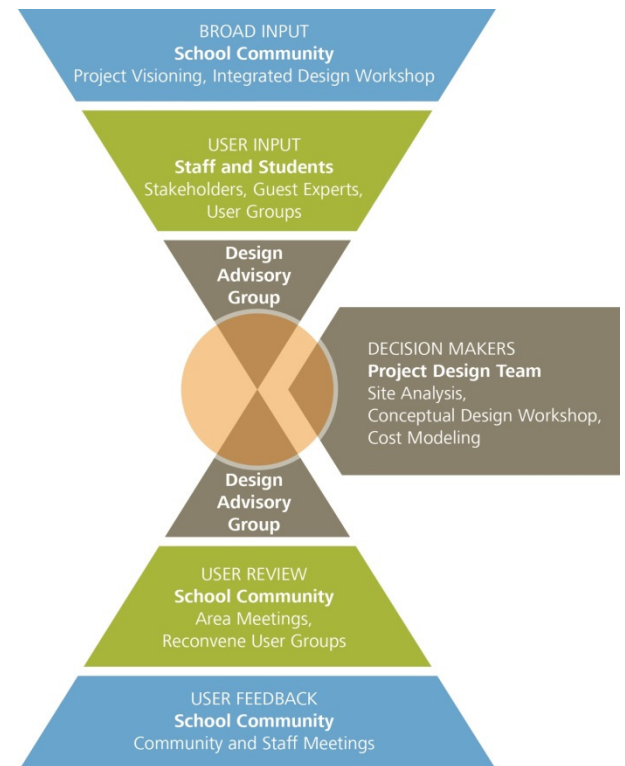
Public Comment

Process & Schedule

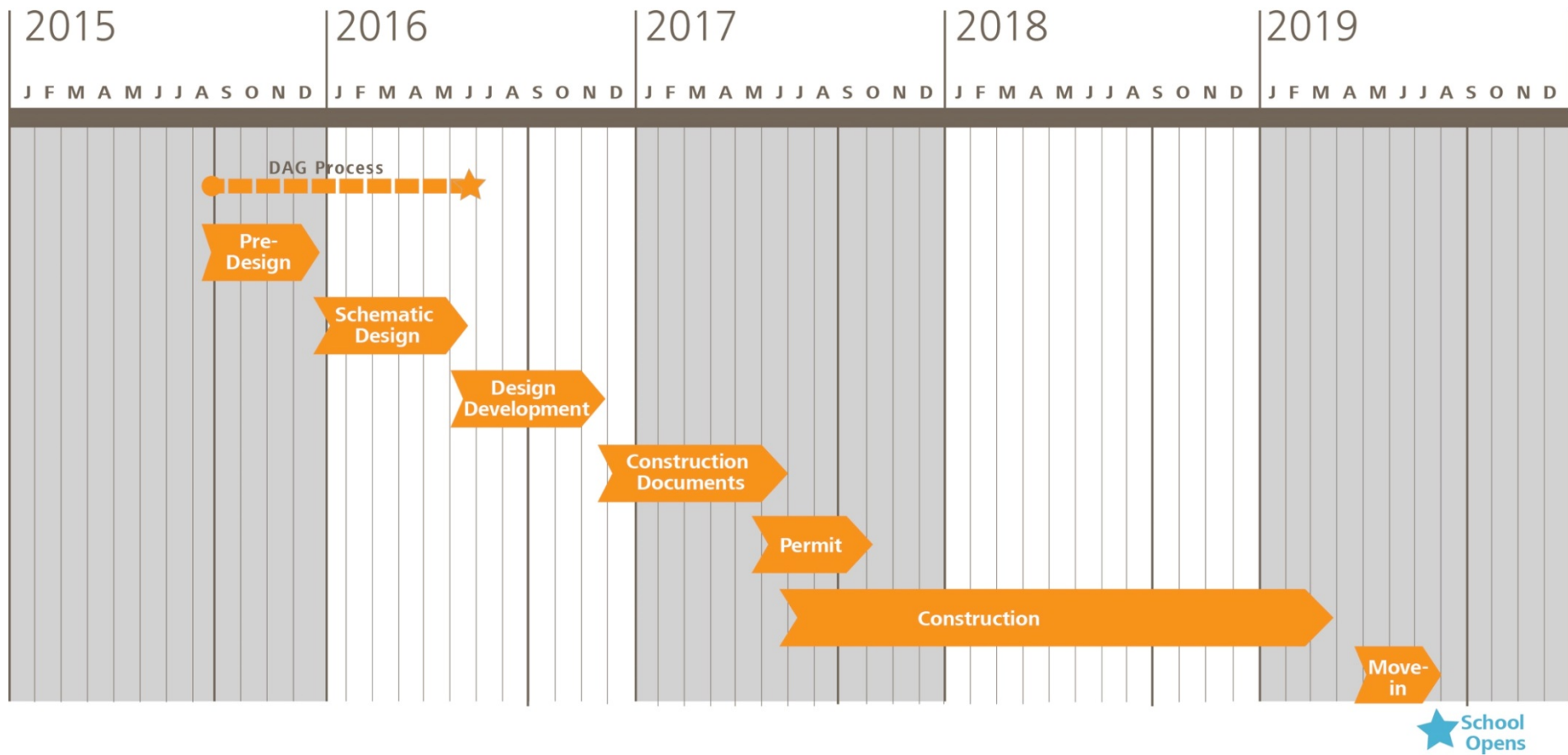


Contributing Voices

PPS Board of Education
Stakeholder Cohorts
Design Advisory Group
Guest Experts
Students
Parents
Community



Project Schedule



★ School Opens



Design Process

Comprehensive Educational Specification

Masterplan :: Budget and Scope of Work

Schematic Design :: Concepts and Options

Design Development :: Building Systems and Integration

Construction Documents :: Coordination and Details



What are Ed Specs?

Definition

Educational specifications are a set of building design characteristics that establish the ways the facilities support programs and curriculum.

The comprehensive ed spec establishes a baseline of equitable facilities standards for school construction efforts across PPS.

As a specific school is modernized, the comprehensive ed spec is tailored through the masterplanning process to suite the individual school.



Design Process

Comprehensive Educational Specification

Masterplan :: Budget and Scope of Work

Schematic Design :: Concepts and Options

Design Development :: Building Systems and Integration

Construction Documents :: Coordination and Details

DAG Process



DAG Outcome

Ensure that community voice is heard

Synthesize community-wide input

Create the foundation & framework

Provide transparency through commitment & participation



Visioning

Where is education heading? Where does Grant want to go?

Over-riding guiding principles

Looking Ahead

Educational Futures|Trends

What if we dream big and are bold?



Eco Workshop | Site Assessment

Envision a sustainable school

Establish sustainability goals

Identify opportunities and strategies

Identify educational opportunities



Conceptual Design

Relationship/Adjacency Diagrams

Plan Test Diagrams

Concepts|Massing

Design Direction Established



Bond Guiding Principles

“It’s a pivotal moment for our schools and our community. A thriving city depends on a strong public school system. This bond offers us an opportunity to not just redesign and rebuild outdated schools, but to reimagine and redefine the education that happens inside them.”

- *Carole Smith, Superintendent Portland Public Schools
May 28, 2013 PPS Vision Summit*



Bond Guiding Principles

Represent Portland's diverse communities

Welcome the community

Inspire creativity & innovation

Build stronger student-teacher relationships

Provide safe, inclusive & flexible environments

Engage new technology

Spur greater collaboration

Build partnerships that help students explore the world outside of school



DAG Role and Responsibilities

Attend meetings & field trips

Provide input

Be honest with one another

Advise team on unique characteristics of the Grant school community

Help to organize and participate in community meetings

Work together to learn about renovation & construction projects

Follow the Ground Rules



DAG Ground Rules

Take personal responsibility

Be respectful

Value differences

**Maintain a constructive,
creative & practical attitude**

Be open-minded

**Support the legitimacy of the
design outcomes**

**Do not undermine public
confidence**

Keep commitments

Have fun!



DAG Operating Framework

District vision, goals and policies

Bond Accountability Committee (BAC)

Comprehensive Educational Specifications

State Historic Preservation Office (SHPO)

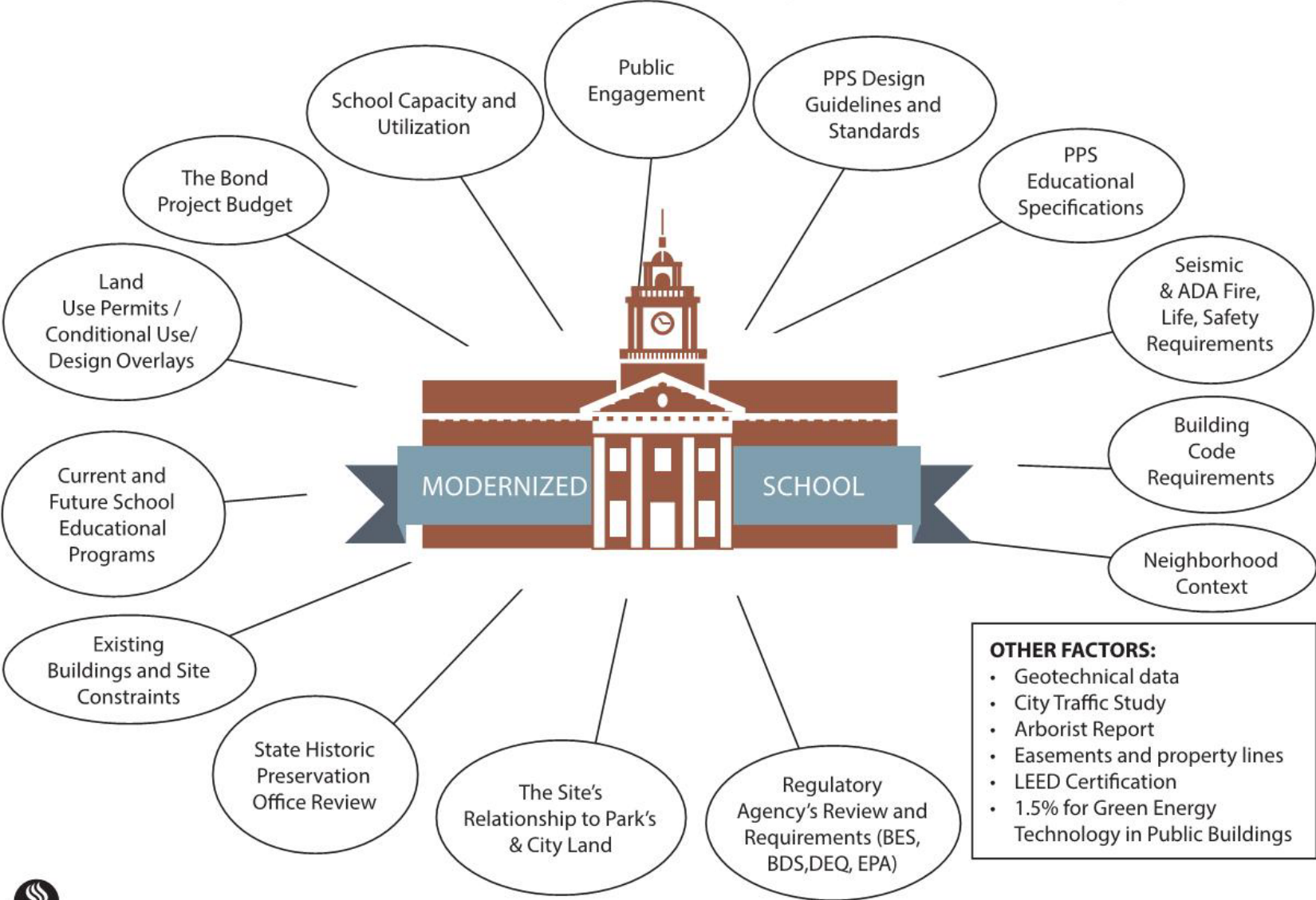
Technical Building Standards

Regulatory:

**Agencies Having Jurisdiction:
City of Portland (BDS),
PBOT, Public Health, BOLI,
Local Utilities**

Federal Policies (e.g. ADA)

Additional Factors Influencing Design



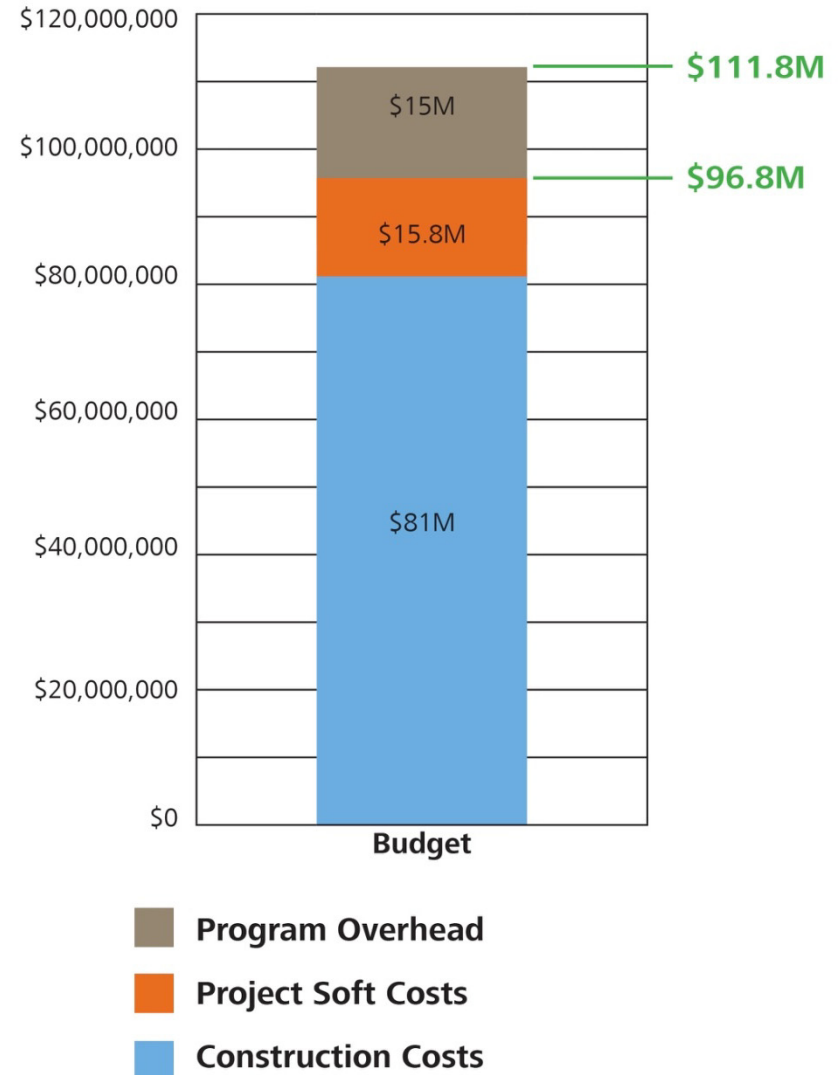
Project Budget

Construction

- Historic Preservation
- Modernization
- Site improvements
- Offsite improvements
- Contingency and sales tax

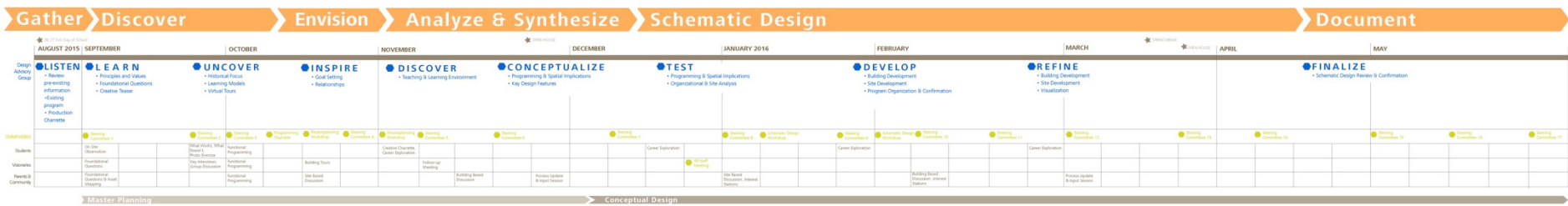
Project "soft costs"

- New furniture and equipment
- Classroom technology
- Network and phones
- Professional services
- Permit and utility fees



Schedule

Masterplanning & Schematic Design Process



Masterplanning & Schematic Design Process



★ 08.27 First Day of School

	AUGUST 2015	SEPTEMBER			OCTOBER				
Design Advisory Group	★ LISTEN <ul style="list-style-type: none"> Review pre-existing information Existing program Production Charrette 	① LEARN <ul style="list-style-type: none"> Principles and Values Foundational Questions Creative Teaser 			② UNCOVER <ul style="list-style-type: none"> Historical Focus Learning Models Virtual Tours 		③ INSPIRE <ul style="list-style-type: none"> Goal Setting Relationships 		
Stakeholder Cohorts		Team Collaboration			Team Collaboration	Team Collaboration	Programming Charrette	Masterplanning Workshop	Team Collaboration
Students		On Site Observation			What Works, What Doesn't, Photo Exercise	Functional Programming			
Staff & Guest Experts		Foundational Questions			Key Interviews, Group Discussion	Functional Programming		Building Tours, Foundational Questions	
Parents & Community		Foundational Questions & Asset Mapping				Functional Programming		Site Based Discussion, Asset Map	

Master Planning

Masterplanning & Schematic Design Process

Analyze & Synthesize

★ OPEN HOUSE

NOVEMBER

DECEMBER

Design
Advisory
Group

4 DISCOVER

- Teaching & Learning Environment

5 CONCEPTUALIZE

- Programming & Spatial Implications
- Key Design Features

Stakeholder
Cohorts



Masterplanning
Workshop



Team
Collaboration



Team
Collaboration



Team
Collaboration

Students

Creative Charrette,
Career Exploration

Staff &
Guest Experts

Follow-up
Meeting

Parents &
Community

Building Based
Discussion,
Asset Map

Process Update
& Input Session

Conceptual

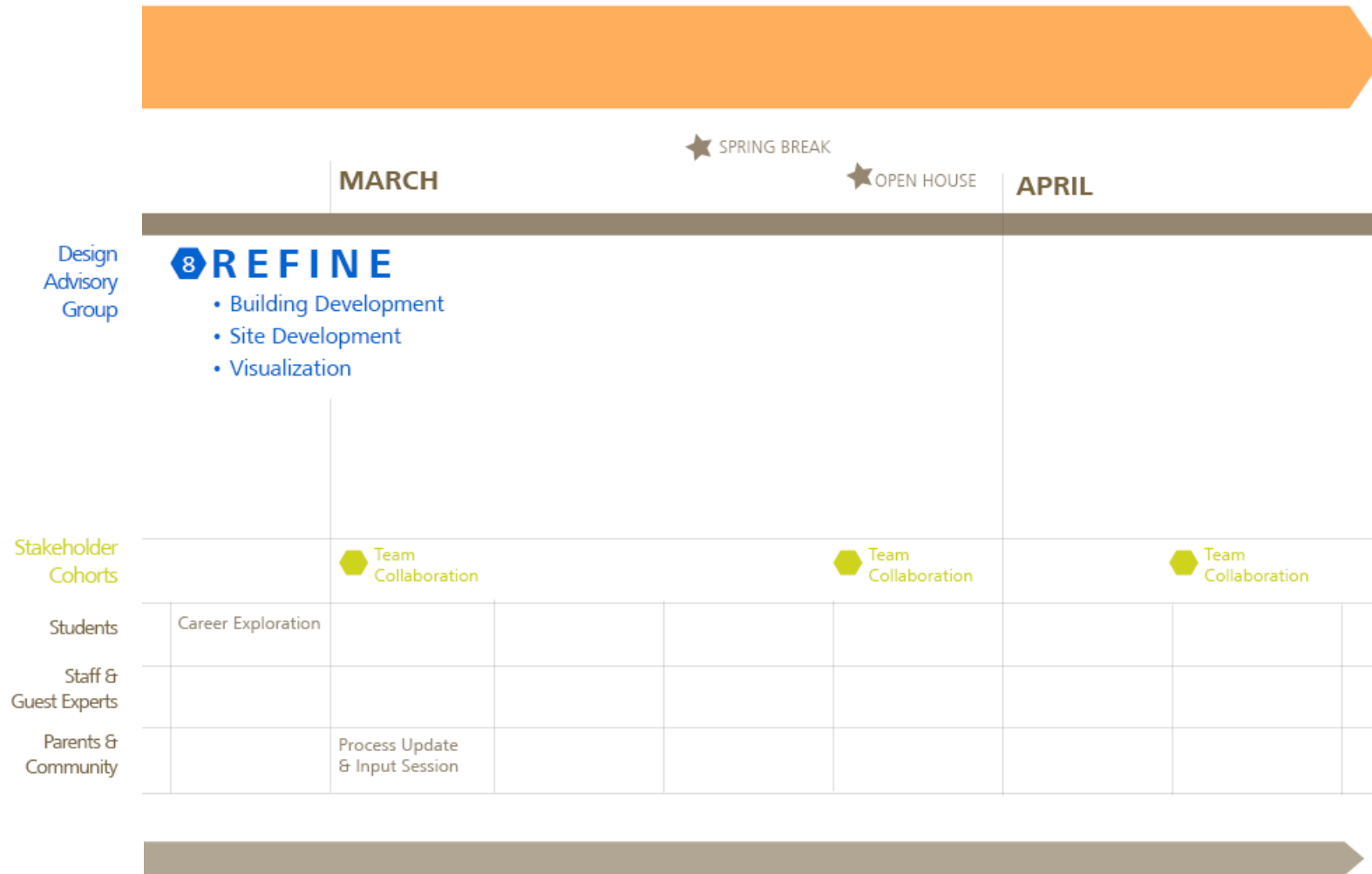
Masterplanning & Schematic Design Process

Schematic Design

		JANUARY 2016				FEBRUARY				
Design Advisory Group		6 TEST <ul style="list-style-type: none"> • Programming & Spatial Implications • Organizational & Site Analysis 				7 DEVELOP <ul style="list-style-type: none"> • Building Development • Site Development • Program Organization & Confirmation 				
Stakeholder Cohorts		Team Collaboration		Schematic Design Workshop		Team Collaboration		Schematic Design Workshop		Team Collaboration
Students	Career Exploration					Career Exploration				
Staff & Guest Experts		All-staff Meeting								
Parents & Community			Site Based Discussion, Interest Stations						Building Based Discussion, Interest Stations	

ual Design

Masterplanning & Schematic Design Process



Masterplanning & Schematic Design Process

Document

MAY

Design
Advisory
Group

9 FINALIZE

- Schematic Design Review & Confirmation

Stakeholder
Cohorts

Team
Collaboration

Team
Collaboration

Team
Collaboration

Students

Staff &
Guest Experts

Parents &
Community



Design Advisory Group Schedule

DAG Meeting 01

09 September, 5:30 - 7:25pm

DAG Meeting 02

24 September, 5:30 - 7:25pm

DAG Meeting 03

08 October, 5:30 - 7:25pm (Oct 9 or 12?)

School Tours

22 October, all day

DAG Meeting 04

05 November, 5:30 - 7:25pm

DAG Meeting 05

19 November, 5:30 - 7:25pm

DAG Meeting 06

17 December, 5:30 - 7:25pm

DAG Meeting 07

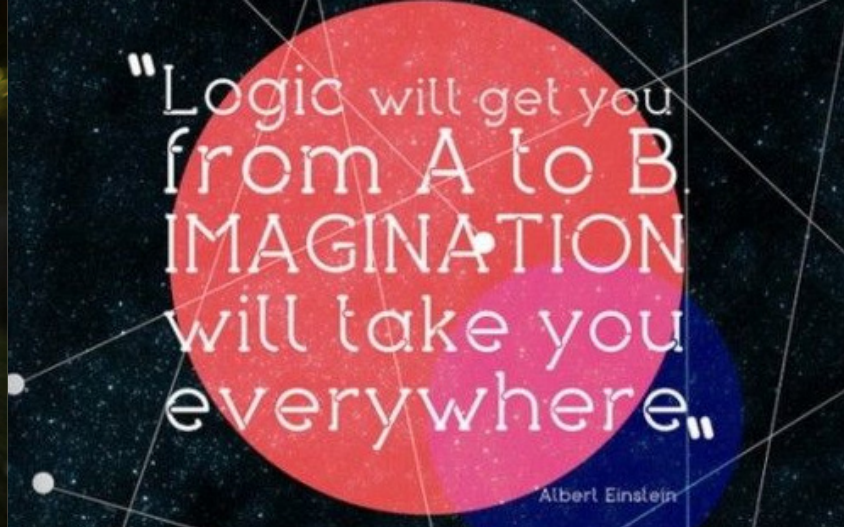
21 January, 5:30 - 7:25pm

DAG Meeting 08

03 March, 5:30 - 7:25pm

DAG Meeting 09

28 April, 5:30 - 7:25pm



Community Schedule

Master Planning Workshop 1

24 October, 9am - 12pm

Master Planning Workshop 2

07 November, 9am - 12pm

Master Planning Open House

03 December, 5:30 - 7:25pm

Schematic Design Workshop 1

09 January, 9am - 12pm

Schematic Design Workshop 2

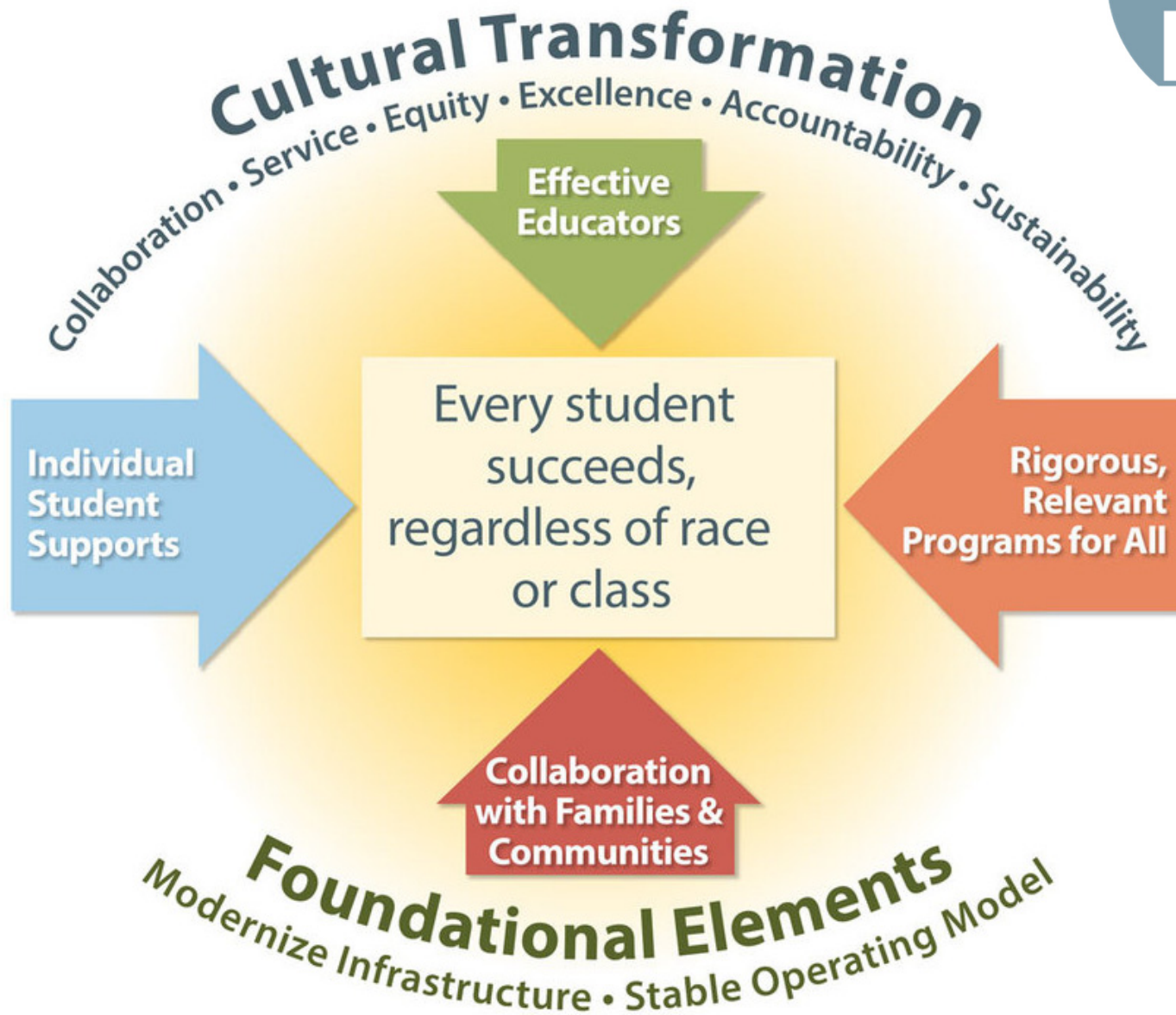
06 February, 9am - 12pm

Schematic Design Open House

31 March, 5:30 - 7:25pm

District Principles & Values

PPS Strategic Framework





GHS Mission

The Mission of Grant High School is to graduate students able to excel in both the workplace and higher education with an enduring love for learning and ready to contribute as citizens of diverse communities.



2012 Bond Mission

Remedy building deficiencies and modernize learning environments to support student achievement and prepare students to compete in the 21st century.

Foundational Questions



1-2-4-All

What should our initial priorities be for the Grant High School renovation?



1-2-4-All

What makes a school healthy, both physically and emotionally?

Creative Exercise



A. What is an ideal learning environment?



B. What is the spirit of Grant HS?



C. If Grant were the center of community, what would it look like?

Next Steps:
Historic Focus
Learning Models
Virtual Tours

Grant Bond Website



News | Directory

Welcome



Students



Families



Get Ready



About

Board

Calendars

Departments

Schools

Employment

Top topics

Google Custom Search

Search PPS

Sign Up for Meals

How do I?

Go

Bond

Community Oversight

Get Involved

Student Engagement

Faubion

Franklin

Grant

Roosevelt

Summer Projects

Seismic

Accessibility

Roof replacement

News & Media

Doing business with PPS

[PPS Home](#) > [Bond](#) > [Grant](#)



Grant High School is one of 3 PPS high schools being modernized as part of an 8-year \$482 million school building improvement bond. Grant's modernization will completely reconfigure and update learning spaces with a focus on indoor environmental quality, sustainability and historic preservation. [Learn more about Grant High School here.](#)

The planning phase for the modernization of Grant will begin in the fall of 2015 and construction is scheduled to begin in summer 2017 and last 2 years. Students are scheduled to returned to a Modernized Grant in the fall of 2019,

The first DAG meeting is Wednesday, Sept. 9th 5:30-7:30p.m. in the GHS Library

[View the Grant Modernization flyer](#) | [in Español](#)

www.pps.k12.or.us/bond/grant

Public Comment (15 min)